



## EOLO BC

### Suspended condensing and modulating gas heater

**Eolo** represents the gas heater with the best cost-benefit ratio. It guarantees high efficiency for greater energy savings and it is suitable for various kind of applications.

The version **EOLO BC AE** represents the best solution to obtain a high comfort and relevant energy savings.



**AIR HEATING**



**Power: from 16 to 105 kW**

#### EOLO BC ADVANTAGES

- » **10 YEARS GUARANTEE** on the heat exchanger and combustion chamber\*
- » **AUTONOMOUS** in its operation
- » **EASY** to be installed
- » **SUITABLE** for several types of application
- » **NOISELESS** during its running
- » **Exchanger and burner** conceived and realized by Systema S.p.A. for maximum efficiency.
- » **YELD OF EOLO BC > UP TO 105,2%**
- » **TYPE OF GAS:** Natural gas, LPG
- » **MODULATION** of the thermal from 100% to 30%

\* The guarantee depends on regular maintenance

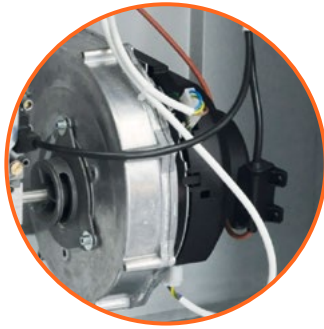
# TECHNICAL FEATURES

## Certification



The gas air heater is CE certified for Type C installation, equipped with sealing fittings for the intake of the combustion air as well as the exhaust of the combustion flues.

## Systema S.p.A. Burner



Patented Premix burner head with flame inversion, specifically conceived and realized by Systema S.p.A.

## Boards compartment



The premix burner and the electronic boards are positioned into two separated and sealed spaces (IP45 protection), easy to be checked.

## Electronic management



The electronic board, that controls the heater, is already integrated into the system for the connection with Systema remote controllers, which can manage one or more units in accordance with the type of panel used and the configuration required.

## Combustion chamber



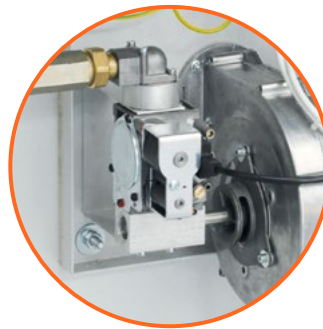
The new stainless steel combustion chamber allows to get high performances and ensure a long duration through the years.

## Reduced dimensions



The dimensions of the gas heater are very small and, thanks to its design, it fits harmoniously anywhere.

## Combustion management



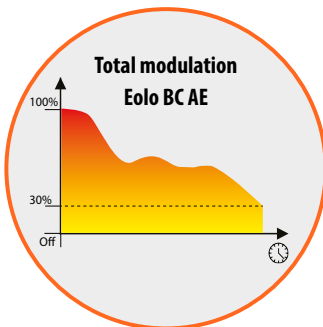
Flame electronic control device and gas valve

## Two types of ventilation

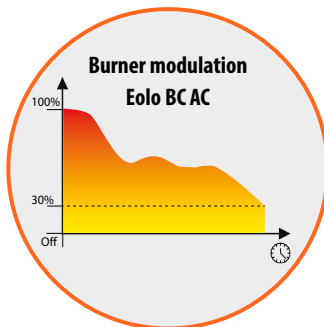


**AE** axial fans for the heating of all the type of environments.  
**AC** centrifugal fans for an heating realized through ducting systems.

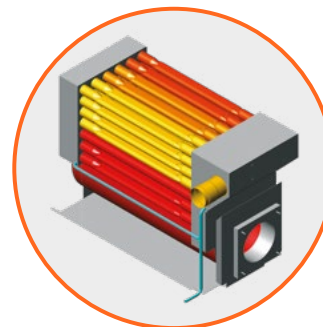
## Two working ways



Automatic modulation of the thermal power from 100% to 30% and automatic modulation of the ventilation flow. PWM fan speed control.



Automatic modulation of the thermal power from 100% to 30% PWM fan speed control.



Exchanger with bundle made of six tubes

Exchanger with bundle made of six tubes, conceived and realized by Systema S.p.A. and equipped with condensing draining pipe.

# TECHNICAL FEATURES

MODEL EOLO			BC 15	BC 25	BC 35	BC 45	BC 55	BC 65	BC 85	BC 100
Category			II <sub>2H3+</sub>							
Appliance type			B23 - C13 - C33 - C53							
Thermal capacity	Max.	kW (Hi)	16	22	32	43	52	63	86	105
	Min.	kW (Hi)	6	8	11	15	18	22	28	32
Nominal efficiency	* Max.	%	95	94,9	95,1	95,2	95,1	95	95	95
	* Min.	%	105,1	104,8	104,9	105,2	105,1	105	105	105
Rated CONSUMPTION at 15°C and 1013,25 mbar	Natural gas G20	m <sup>3</sup> /h	1,69	2,33	3,39	4,55	5,5	6,67	9,1	11,11
	LPG Butane G30	kg/h	1,26	1,73	2,52	3,39	4,1	4,97	6,78	8,28
	LPG Propane G31	kg/h	1,24	1,71	2,49	3,34	4,04	4,89	6,68	8,16
Gas attachment diameter		inc.	3/4"							
Suction tube diameter		mm	100	100	100	100	100	100	130	130
Exhaust pipe diameter		mm	100	100	100	100	100	100	130	130
Chimney pressure		Pa	80	80	90	110	110	120	130	130
Electrical power supply		V/Hz	230/50							
Working temperature		°C	-15 / +40							

## TECHNICAL FEATURES AE VERSION WITH HELICAL FANS

MODEL EOLO		BC 15	BC 25	BC 35	BC 45	BC 55	BC 65	BC 85	BC 100
<b>AE version with helical fans</b>									
Electrical absorbed power	W	130	350	400	590	620	730	900	1500
Number of helical fans **	n.	1	1	1	1	1	2	2	2
Modello ventilatore (versione standard, no brushless)		S6 350	S4 400	S4 450	S6 500	S4 500	S4 450	S4 500	S4 500
Air treated capacity	m <sup>3</sup> /h	1900	2900	3600	4500	5800	7000	9000	11000
Heating drop min/max	°C	10/22	10/21	12/24	14/25	12/24	12/23	13/26	13/25
Air throw	m	10	13	17	19	23	27	27	30
Configuration <b>AE</b>	kg	64	64	76	92	124	138	156	192
Configuration <b>AE+OPTIONAL PL</b>	kg	76	78	93	110	143	166	183	229

## TECHNICAL FEATURES AC VERSION WITH CENTRIFUGAL FANS

MODEL EOLO		BC 15	BC 25	BC 35	BC 45	BC 55	BC 65	BC 85	BC 100
<b>AC version with centrifugal fans</b>									
Electrical absorbed power	W	440	540	580	1190	1290	1120	2260	2580
Number of centrifugal fans	n.	1	1	1	1	1	2	2	2
Fan model		DDM 9/7	DDM 9/7	DDM 10/10	DDM 10/10	DD 12/9	DDM 10/10	DDM 10/10	DD 12/12
Air treated capacity	m <sup>3</sup> /h	2000	2500	3000	4000	5000	5600	8000	11000
Heating drop min/max	°C	18/34							
Total pressure	Pa	150	250	150	200	200	200	250	200
Configuration <b>AC</b>	kg	76	76	86	108	144	156	182	212
Configuration <b>AC+OPTIONAL PL</b>	kg	88	90	103	126	163	184	209	249
Configuration <b>AC+OPTIONAL C</b>	kg	88	90	103	126	163	184	209	249
Configuration <b>AC+OPTIONAL D</b>	kg	88	90	103	126	163	184	209	249
Configuration <b>AC+OPTIONAL E</b>	kg	85	87	102	125	164	183	209	251

**OPTIONAL PL** = Air intake plenum - **OPTIONAL C** = Air mixing plenum with external intake from the bottom

**OPTIONAL D** = Air mixing plenum with external intake from above - **OPTIONAL E** = Air mixing plenum with intake from the bottom and external intake from above

\* Standard conditions - \*\* Further fans, with phase-cutting control or brushless version, are also available upon request

